

2023-03-08

Historical anthropogenic disturbances explain long-term moorland vegetation dynamics

Rowney, F

<https://pearl.plymouth.ac.uk/handle/10026.1/20756>

10.1002/ece3.9876


Ecology and Evolution

Wiley Open Access

All content in PEARL is protected by copyright law. Author manuscripts are made available in accordance with publisher policies. Please cite only the published version using the details provided on the item record or document. In the absence of an open licence (e.g. Creative Commons), permissions for further reuse of content should be sought from the publisher or author.

RESEARCH ARTICLE

Historical anthropogenic disturbances explain long-term moorland vegetation dynamics

Francis M. Rowney¹  | Ralph M. Fyfe¹ | Leonard Baker² | Henry French² | Martha B. Koot¹ | Havananda Ombashi³ | Rhys G. O. Timms⁴

¹School of Geography, Earth and Environmental Sciences, University of Plymouth, Plymouth, UK

²Department of History, University of Exeter, Exeter, UK

³School of Culture and Society, Aarhus University, Aarhus, Denmark

⁴Quaternary Scientific, (Quest), School of Archaeology, Geography and Environmental Science, University of Reading, Reading, UK

Correspondence

Francis M. Rowney, School of Geography, Earth and Environmental Sciences, University of Plymouth, Plymouth, UK.
Email: francis.rowney@plymouth.ac.uk

Funding information

Leverhulme Trust, Grant/Award Number: RPG-2020-045

Abstract

Upland moorlands are important landscapes, but many are considered degraded as a result of human activities. Consequently, their protection and restoration are of substantial concern. In Europe, restoration activities are often aimed at reversing the effects of 19th and 20th century “agricultural improvements,” which often involved major drainage schemes. However, the ecological effects and long-term ecological context of “agricultural improvement” are not yet fully understood. To develop this understanding, we analyze paleoecological data (pollen, coprophilous fungal spores, microcharcoal) from five upland peatland sites using a range of analytical approaches: cluster analysis, principal component analysis, rate-of-change analysis, and regression analyses incorporating documentary historical data. The sites are located on Exmoor (South West England, UK), a landscape that typifies historic upland degradation. We demonstrate that in this landscape, 19th century drainage is associated with declines in *Sphagnum* and non-arboreal taxon richness; over longer timescales burning is associated with enhanced graminoid monocot abundance and grazing with lower taxon richness. We also show that rate-of-change in moorland vegetation communities during the 19th century is not distinctive in a long-term context: change has been a constant in this landscape, rather than an exception during the 19th century. Our findings indicate that the aims of “restoration” interventions intended to increase *Sphagnum* abundances, increase taxon richness and reduce graminoid dominance are consistent with the long-term dynamics of peatland systems, such as those on Exmoor. “Restoration” deemed successful in these terms may or may not resemble pre-drainage conditions, which were themselves a function of millennia of successive moorland management regimes.

KEYWORDS

coprophilous fungal spores, interdisciplinary, moorlands, Paleoecology, peatlands, pollen

TAXONOMY CLASSIFICATION

Biodiversity ecology, Community ecology, Paleoecology, Restoration ecology

This is an open access article under the terms of the [Creative Commons Attribution](https://creativecommons.org/licenses/by/4.0/) License, which permits use, distribution and reproduction in any medium, provided the original work is properly cited.

© 2023 The Authors. *Ecology and Evolution* published by John Wiley & Sons Ltd.

1 | INTRODUCTION

Moorland landscapes are important landscapes for their roles in supporting climate change mitigation, water resource management, specialist biota, and biocultural heritage, particularly in areas with extensive peatlands (Grand-Clement et al., 2013; Littlewood et al., 2010; Minayeva et al., 2017; Ritson et al., 2016; Rotherham, 2015; Zak & McInnes, 2022). Consequently, their protection and restoration are of substantial concern, as many are considered to be degraded as a result of human activities such as drainage, burning, and peat cutting (Grand-Clement et al., 2013; Leifeld & Menichetti, 2018; Tanneberger et al., 2021). Macro-ecological studies have demonstrated the influence of different management and environmental conditions on the vegetation of peatlands (Yeo & Blackstock, 2002), although the role of particular disturbance agents (e.g., fire) remains controversial (Davies et al., 2016). Long-term data spanning historical timescales offer important insights into disturbance regimes, but are limited to re-surveys that do not extend beyond ~60 years into the past (Alday et al., 2022; Britton, Hester, et al., 2017; Britton, Hewison, et al., 2017). The initial impacts of important historical disturbance regimes, such as enclosure and drainage, are not captured in such datasets, risking inappropriate benchmarking in measurements of ecosystem recovery or condition. Long-term data from paleoecology offer approaches with potential to resolve this problem (Seddon et al., 2014). In this paper, we combine such paleoecological data with historical information to address the extent to which anthropogenic disturbance regimes impacted peatland character, drawing on data from Exmoor, South West England.

The 19th century was a period of substantial change in terms of society, economy, and land governance, with Parliamentary enclosure legislation between 1760 and 1840 CE leading to major landscape change. Enclosure on Exmoor represents one of the most ambitious projects of the time: ~60 km² was purchased by John Knight in 1818 CE and subjected to “agricultural improvement” schemes (Orwin & Sellick, 1970). Management practices, particularly related to drainage and irrigation for “agricultural improvement,” are well-documented (Hegarty & Wilson-North, 2014; Orwin & Sellick, 1970; Riley, 2019; Riley & Wilson-North, 2001), and some associated changes in vegetation and microbial ecology have been noted at individual sites (Chambers et al., 1999; Francis & Slater, 1990; Fyfe, Brown, & Rippon, 2003; Rowney et al., 2022). Restoration work aimed at reversing the effects of drainage on Exmoor has been ongoing since 2010 (Gatis et al., 2016; Grand-Clement et al., 2015). Vegetation is monitored in restoration areas but the ecological impacts and long-term ecological context of 19th century “agricultural improvements” are not fully understood. To develop this understanding, we address the following questions, using paleoecological analyses spanning the period of time before, during, and after “improvement,” and incorporating documentary historical data:

1. To what extent have grazing, burning and drainage been associated with ecological change on Exmoor peatlands during the last ~600 years?
2. Was the 19th century a notable period of ecological change on Exmoor, in terms of character and/or rate-of-change?
3. Are the aims of restoration activities on Exmoor consistent with long-term vegetation dynamics?

We focus specifically on *Sphagnum* abundance, graminoid monocot abundance, and taxon richness. Each of these variables is linked to specific ecosystem services or stakeholder interests: *Sphagnum* is a keystone taxon that plays a central role in carbon sequestration and water resource management (Bacon et al., 2017; Grand-Clement et al., 2013; Ritson et al., 2016); the mono-dominance of graminoids (e.g., *Molinia caerulea*, *Eriophorum vaginatum*) in upland habitats is of notable concern to land managers (Glaves, 2016; Lunt et al., 2021; Marrs et al., 2004; Meade, 2016); biodiversity (taxon richness) has broad societal value and provides a whole-community perspective (Littlewood et al., 2010; Minayeva et al., 2017).

2 | MATERIALS AND METHODS

Key methodological details are provided here, and further details are given in the Appendix S1.

Samples for paleoecological analyses were collected from five upland peatland sites within the Royal Forest area of Exmoor: Blackpitts, Larkbarrow, Little Ashcombe, Ricksy Ball, and The Chains (Figure 1).

2.1 | Chronology

The peat sequences were dated using a suite of methods: AMS (accelerator mass spectrometry) radiocarbon analysis, fallout radionuclide (²¹⁰Pb and ¹³⁷Cs) analysis, and tephrochronology. Age-depth models were constructed from robust dates using the R (R Core Team, 2022) packages “rplum” (Blaauw et al., 2021) (Blackpitts, Larkbarrow, Little Ashcombe) and “rbacon” (Blaauw et al., 2022) (The Chains) (see Rowney et al., 2022, for Ricksy Ball). Radiocarbon dates were calibrated using the IntCal20 calibration curve (Reimer et al., 2020).

2.2 | Paleoecology

Pollen, coprophilous fungal spore, and microcharcoal samples were prepared and recorded simultaneously (i.e., the same samples, preparation, and slides were used), using standard pollen extraction methods (Moore et al., 1991). Known quantities of an exotic marker (*Lycopodium* spores) were added to allow the calculation of concentrations and influx rates (Stockmarr, 1971). Typically,

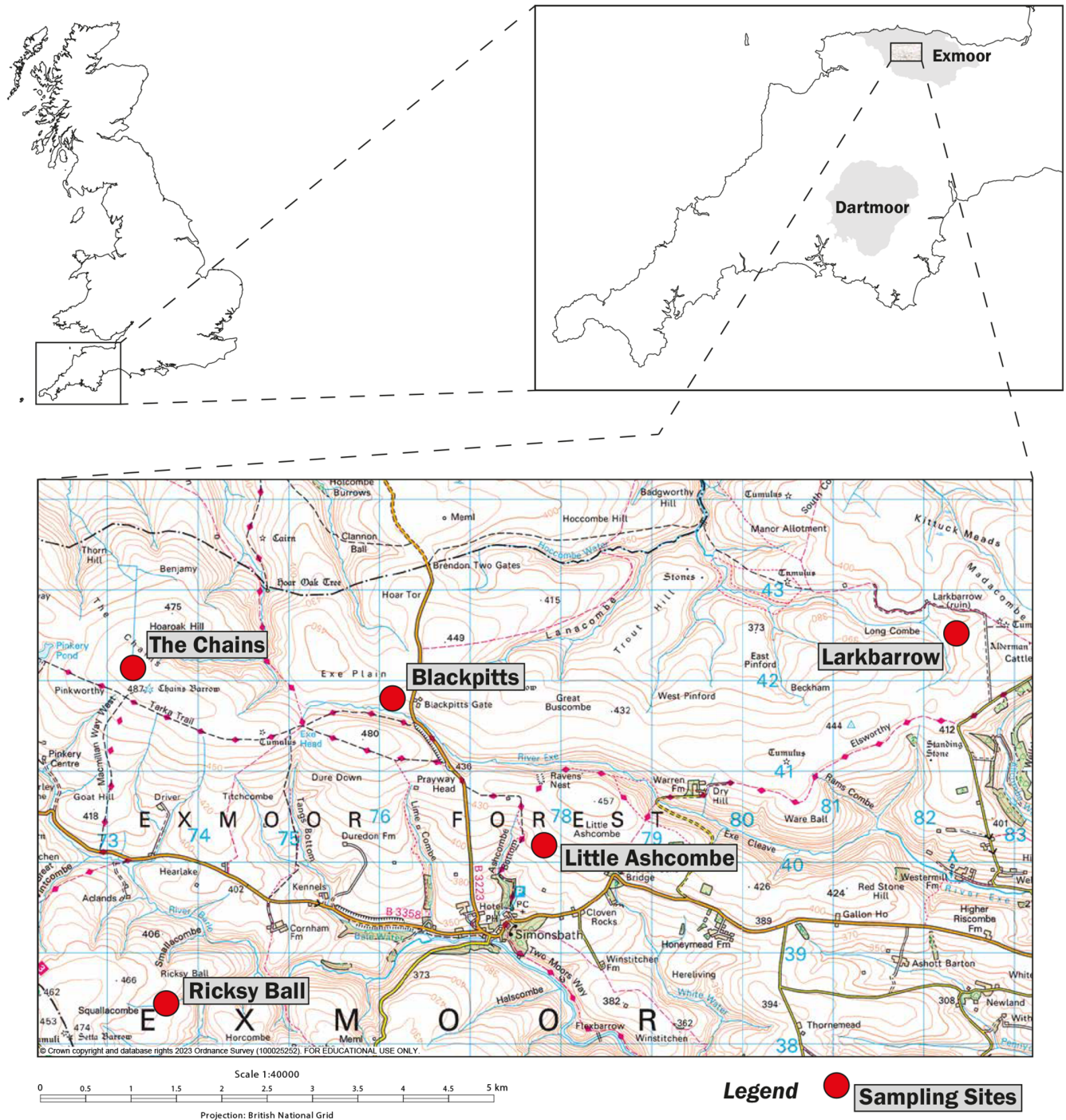


FIGURE 1 Map of paleoecological sampling sites.

300 land pollen grains were identified per sub-sample: a sufficient number for characterizing assemblages (Djamali & Cilleros, 2020). Three fungal spore types demonstrably associated with dung (*Sporormiella*-, *Podospora*- and *Sordaria*-types) (Baker et al., 2013; Perrotti & van Asperen, 2018) were recorded. Their abundances are reliable correlates of moorland stocking densities, particularly when multiple types are considered simultaneously (Davies et al., 2022). Microcharcoal abundances were estimated by counting charcoal particles (shards) >50µm (length).

2.3 | Archival data

Documentary evidence for interventions related to 19th century “agricultural improvement” has been drawn from the “Knight family archive” (contemporary financial accounts and correspondence) (Wilson-North, 2017) and other sources (see Appendix). These are constrained to specific times (years, often months) and areas (e.g., tenanted farms) and include a range of activities with potential for inclusion in subsequent quantitative analyses (see

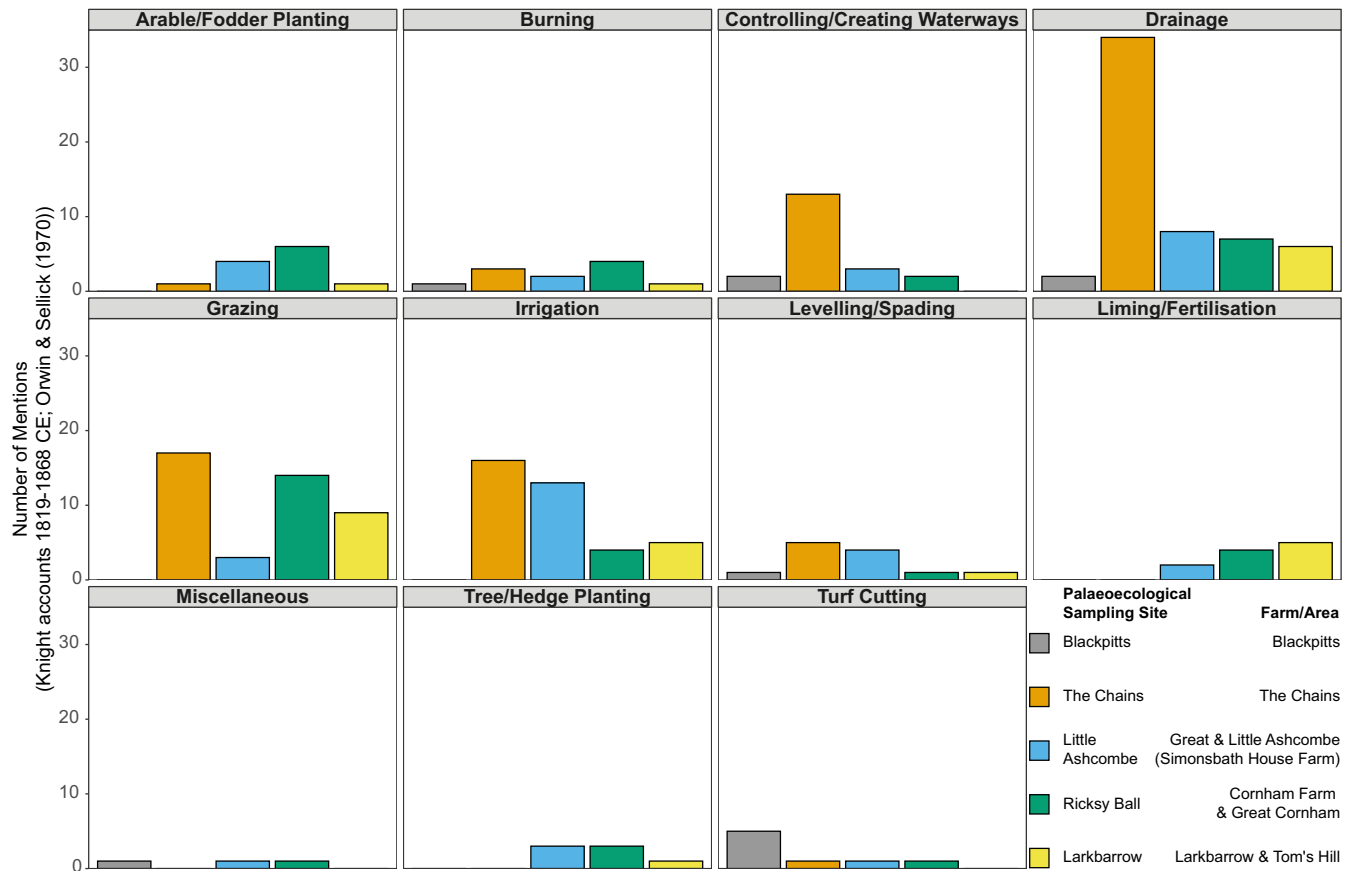


FIGURE 2 Summary of documented activities for each area relevant to paleoecological sampling sites (see Table S1).

Figure 2 and Table S1). Paleoecological sampling sites can be confidently related to farms/areas mentioned (see Figure 2), though the lack of accompanying contemporary mapping means that the precise spatial extents of these farms/areas are difficult to determine. Drainage is consistently recorded at each site (see Figure 2), and as there is no evidence for extensive drainage on Exmoor prior to the 19th century (MacDermot, 1973; Orwin & Sellick, 1970), this provides confident dates for the earliest moorland drainage in each area. Grazing and burning have substantially longer histories (Fyfe et al., 2018; Riley & Wilson-North, 2001), and archival data are insufficient to represent these activities for the study period (~600 years). Other activities that are unlikely to have taken place prior to the 19th century (e.g., liming) are less consistently recorded and are unsuitable for subsequent analyses. These data demonstrate the breadth of activities undertaken during this period (illustrating that disturbance was not limited to drainage), but they cannot be considered fully comprehensive records, as the accounts and correspondence are dependent on different motivations, incentives, and tenancies (see Appendix S1).

2.4 | Cluster analysis

Cluster analysis was used with rate-of-change analysis (see below) to classify groups of samples with similar paleoecological

assemblages and to identify clusters associated with periods of rapid ecological change. Analyses were performed using the “vegan” (Oksanen et al., 2022) and the R function “hclust” (R Core Team, 2022).

2.5 | Ordination

Unconstrained ordination was used to assist in characterizing clusters. Detrended correspondence analyses (DCA) were performed to determine environmental gradient lengths, and all gradient lengths were <2.5 standard deviations. On this basis, a linear method (PCA) was selected (following Legendre and Birks (2012)). To aid interpretability, data were filtered to include only common taxa (those occurring in ≥25% of samples) prior to analysis (the inclusion of more taxa in sensitivity testing made little difference), and abundances (influx rates) were square root transformed (to facilitate analyses based on the direction and relative magnitude of changes). Analyses were performed using the R package “vegan” (Oksanen et al., 2022).

2.6 | Rate-of-change analysis

Rate-of-change analysis was used to explore the pace of ecological change through time, and in particular, whether 19th

century rate-of-change is notable in a long-term context (~600 years). Analyses were performed using the R package “R-Ratepol” (Mottl et al., 2021).

2.7 | Regression modeling

Regression modeling was used to assess associations between three response variables representing different aspects of moorland vegetation (*Sphagnum* spore influx, monocot pollen influx, non-arboreal taxon richness) and several explanatory variables representing potential controls (see Table 1). Generalized additive models (GAMs) were used for these analyses, using the R package “mgcv” (Wood, 2022). GAMs are a flexible extension of generalized linear models (GLMs), which do not assume linearity in the relationships between the mean of the response and the explanatory variables (Birks, 2012; Wood, 2017). The effects of the explanatory variables on the mean response are defined by “unknown” smooth functions that are estimated from the data, rather than being assumed (e.g., linear) a priori. As such, GAMs are considered “data-driven” models (Birks, 2012). The construction of GAMs for each response variable was broadly similar: All explanatory variables in Table 1 were included, as well as random effects for sampling sites.

3 | RESULTS

3.1 | Chronology

Sequences were dated using a combination of methods (see Table 2). Age-depth models were constructed for each site using this combination of datasets (details in Figures S3–S6). Chronological details for Ricksy Ball have been published (Rowney et al., 2022).

3.2 | Paleoecological assemblages

The pollen data (Figures S7–S10; Rowney et al., 2022) show that the five sites have been open moorland for at least the last ~600 years, though each site has differed in the precise characteristics of local moorland vegetation and disturbance regimes through time. The relative abundances of major vegetation types vary in space and time, but the major taxa present are broadly consistent: grasses (Poaceae); sedges (Cyperaceae); heathers (*Calluna vulgaris*, Ericaceae undiff.); herbaceous taxa associated with open habitats (*Plantago lanceolata*, *Potentilla*-type, *Rumex acetosa/acetosella*); trees and shrubs, most likely in the surrounding landscape (*Betula*, *Corylus avellana*-type, *Quercus*).

Figure 3 highlights the paleoecological variables used in regression modeling: *Sphagnum* and graminoid monocot (Poaceae and Cyperaceae) influx rates, non-arboreal taxon richness, coprophilous fungal spore influx, and microcharcoal (>50 μm) influx. In general, temporal trends in these variables are site-specific, rather than following a common pattern, though some similarities are clear. The influx rates of *Sphagnum* and coprophilous fungal spores are particularly site-specific, likely reflecting different hydrological settings and varying land use through time at each site. Graminoid monocot pollen and microcharcoal influx show similarities between sites and are both generally higher (or increase) during the nineteenth and twentieth centuries. Non-arboreal taxon richness is variable in space and time, but follows a general pattern of decline (though there is substantial complexity within this), particularly during the nineteenth and/or twentieth centuries.

3.3 | Cluster, ordination, and rate-of-change analyses

Non-arboreal components of pollen assemblages were divided into five clusters (corresponding to the number of sites, to allow for the

TABLE 1 Response and explanatory variables in generalized additive models (GAMs) (summary statistics: Table S2).

Variable	Description	
Response	<i>Sphagnum</i> abundance	<i>Sphagnum</i> spore influx (spores cm ⁻² yr ⁻¹)
	Graminoid monocot abundance	Poaceae and Cyperaceae pollen influx (grains cm ⁻² yr ⁻¹)
	Taxon richness (diversity)	Non-arboreal pollen taxon richness (the number of non-arboreal pollen types identified per sample)
Explanatory	Summer precipitation	Reconstructed based on stable oxygen isotopes in tree rings (Loader et al., 2020), 1201–2000 CE.
	Grazing (coprophilous fungal spores)	<i>Sordaria</i> -type, <i>Sporormiella</i> -type, and <i>Podospora</i> -type influx (spores cm ⁻² yr ⁻¹)
	Burning (microcharcoal)	Microcharcoal (>50 μm) influx (shards cm ⁻² yr ⁻¹)
	Drainage	Binary variable (“pre-drainage” or “post-drainage”) based on earliest record of drainage per site.
	Site type	Binary variable (“ombrotrophic” or “soligenous”), accounting for differences in pollen catchment area.

TABLE 2 Summary of dating methods.

Site	Radiocarbon dates (Table S3)	Fallout radionuclide (²¹⁰ Pb, ¹³⁷ Cs) (Table S4)	Tephras (with ages) (Table S5; Figures S1 and S2)
Blackpitts	13	Yes	3
Larkbarrow	5	Yes	0
Little Ashcombe	6	Yes	2
Ricksy Ball ^a	8	Yes	2
The Chains	6	No	0

^aRowney et al. (2022).

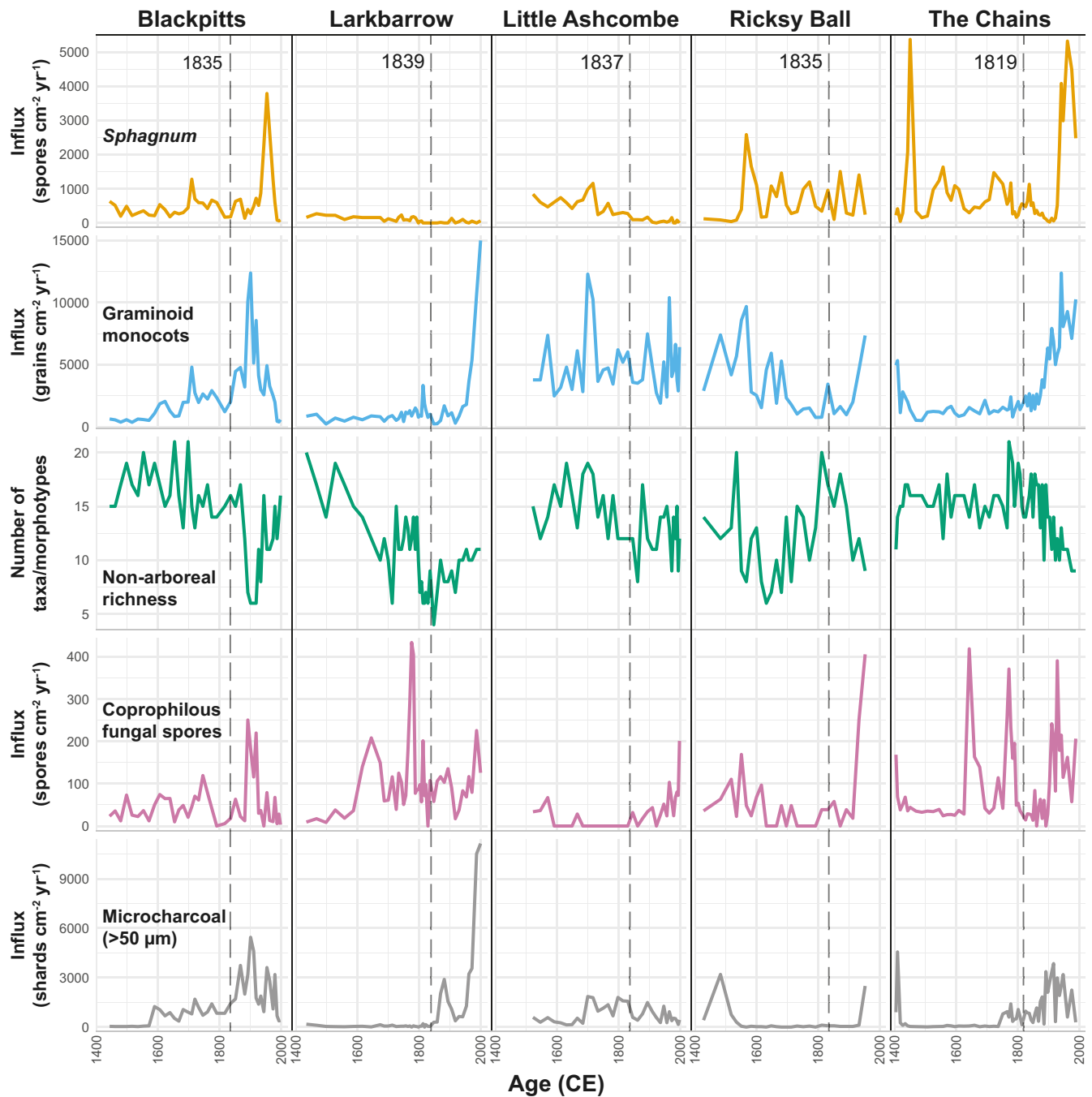


FIGURE 3 Summaries of key variables used in regression modeling (dashed lines represent earliest records of drainage per site).

potential that spatial clustering may be more important than temporal), the characteristics of which are summarized in Figures 4 and 5 (see also Figure S11). These appear to be broadly defined by the abundances of Poaceae and *Calluna vulgaris*. Clusters 1 and 4 have the highest proportions of graminoid monocots, particularly Poaceae (grass), alongside herbaceous taxa including *Plantago lanceolata*, *Potentilla*-type, and *Rumex acetosa/acetosella*, while Clusters 2 and 3 show more even mixtures of monocots and other herbaceous taxa. Cluster 5 represents samples with high abundances of ericales (*Calluna vulgaris*, Ericaceae undiff.), largely drawn from Larkbarrow.

In general, temporal trends in rate-of-change are site-specific, rather than following a common pattern (Figure 6). Some sites (Blackpitts, Larkbarrow) show distinctive increases in rate-of-change during the 20th century, while others show broadly consistent (Little Ashcombe, Ricksy Ball) or frequently fluctuating (The Chains) rate-of-change through time. There is no evidence for increased rates of change during the 19th century (relative to preceding or subsequent periods). As with rates of change, the patterns of clusters through time are also broadly site-specific (Figure 6), rather than following a general pattern. However, the distinctive increases in rate-of-change during the 20th century at some sites (Blackpitts, Larkbarrow, and, to a lesser extent, The Chains) are all associated with shifts toward greater graminoid monocot abundances.

3.4 | Regression analyses

We demonstrate that relationships between moorland management and vegetation are not straightforward. Proxies of three different aspects of moorland vegetation (*Sphagnum* abundance, graminoid monocot abundance, taxon richness) (see Table 1) each have different relationships with proxies of three aspects of moorland management (burning, grazing, drainage) (see Figures 7–9, Tables 1 and S6–S8).

Nineteenth century drainage is significantly (negatively) associated with both *Sphagnum* spore influx (Figure 7) and non-arboreal taxon richness (Figure 9), but it is not associated with graminoid monocot pollen influx (Figure 8). Relative to “pre-drainage” pollen samples, “post-drainage” samples are associated with -171.24 *Sphagnum* spores $\text{cm}^{-2} \text{yr}^{-1}$ (± 90.86 , 2σ) (Figure 7) and -2.27 non-arboreal taxa (± 0.86 , 2σ) (Figure 9). *Sphagnum* is also significantly associated with site type: relative to ombrotrophic sites (Blackpitts, The Chains), soligenous sites (Larkbarrow, Little Ashcombe, Ricksy Ball) are associated with -255.22 *Sphagnum* spores $\text{cm}^{-2} \text{yr}^{-1}$ (± 182.88 , 2σ) (Figure 7). In these models, “drainage” is represented by a binary variable, dividing samples into ~ 400 years before drainage and ~ 200 years following the first records of drainage for each site. Therefore, it is possible that these relationships may reflect longer term, centennial-scale trends in *Sphagnum* abundance and taxon richness, rather than a direct effect of 19th century drainage. This is difficult to account for

directly, as the linearly temporal nature of the “drainage” variable means that adjusting for time would potentially obscure any “real” effects of drainage on the outcome variables. In sensitivity testing, data were restricted to a shorter time period (1750–1900, $n = 72$) (Table S9), removing centennial-scale trends preceding the 19th century, and any potential impacts of 20th century drainage. Statistically significant relationships with drainage remained for both *Sphagnum* and taxon richness, though each was slightly reduced. This suggests that 19th century drainage was associated with further declines in these aspects of moorland vegetation, in addition to longer term declines. However, site hydrology (site type) is likely a more significant influence on *Sphagnum* abundance.

Microcharcoal ($>50\mu\text{m}$) influx is significantly (positively) associated with monocot pollen influx (Figure 8), but it is not significantly associated with either *Sphagnum* (Figure 7) or taxon richness (Figure 9). The maximum predicted effect on monocot pollen influx is $+12927.52$ pollen grains $\text{cm}^{-2} \text{yr}^{-1}$ (± 1323.95 , 2σ) with 11138.55 microcharcoal ($>50\mu\text{m}$) shards $\text{cm}^{-2} \text{yr}^{-1}$, and the minimum is -1135.96 pollen grains $\text{cm}^{-2} \text{yr}^{-1}$ (± 191.16 , 2σ) with 0 microcharcoal ($>50\mu\text{m}$) shards $\text{cm}^{-2} \text{yr}^{-1}$. This is a linear relationship (Figure 8), equating to an effect size of $+1.26$ monocot pollen grains $\text{cm}^{-2} \text{yr}^{-1}$ per 1 microcharcoal ($>50\mu\text{m}$) shard $\text{cm}^{-2} \text{yr}^{-1}$. This suggests that moorland burning has promoted grass (Poaceae) and/or sedge (Cyperaceae) abundance on Exmoor.

Coprophilous fungal spore influx is significantly (non-linearly) associated with non-arboreal taxon richness (Figure 9), but it is not associated with either *Sphagnum* (Figure 7) or graminoid monocots (Figure 8). This relationship is negative from 0 to 208.83 spores $\text{cm}^{-2} \text{yr}^{-1}$ (representing 92% of the dataset). Within this range, 208.83 spores $\text{cm}^{-2} \text{yr}^{-1}$ is associated with -1.71 non-arboreal taxa (± 1.07 , 2σ), and 0 spores $\text{cm}^{-2} \text{yr}^{-1}$ is associated with $+1.09$ non-arboreal taxa (± 0.74 , 2σ). At values >208.83 spores $\text{cm}^{-2} \text{yr}^{-1}$ (maximum: 433.88 spores $\text{cm}^{-2} \text{yr}^{-1}$), the relationship with taxon richness is uncertain. (Sensitivity testing, in which individual fungal spore types (*Sordaria*-type, *Podospora*-type, and *Sporormiella*-type) were used instead of the total (Table S10), indicates that this relationship is primarily derived from the *Sordaria*-type spores.) This suggests that increases in grazing pressure have been associated with decreases in non-arboreal diversity on Exmoor, though little additional impact is associated with increases in coprophilous fungi beyond ~ 200 spores $\text{cm}^{-2} \text{yr}^{-1}$. There is also a “significant” ($p < .01$) (positive) association with monocots, but the gradient of this relationship is weak to the extent that it can be considered negligible (Figure 8).

4 | DISCUSSION

We present a detailed, interdisciplinary study of ecological change on a series of upland peatlands over the last ~ 600 years, incorporating historical data into paleoenvironmental analyses. We demonstrate the long-term dynamism of upland peatlands, and that human interventions (drainage, burning, pastoral farming) had differential

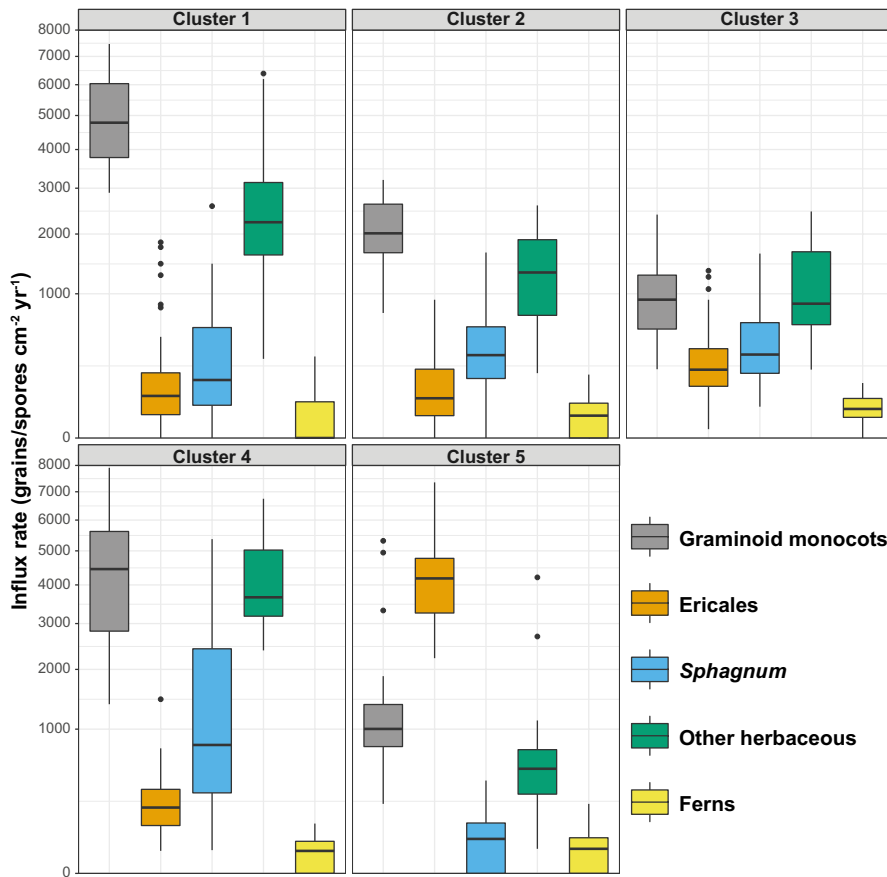


FIGURE 4 Summaries of clusters based on vegetation groups (see also Figure S11).

impacts on moorland vegetation through time. This provides vital long-term data for ongoing management aimed at the “restoration” of peatland landscapes.

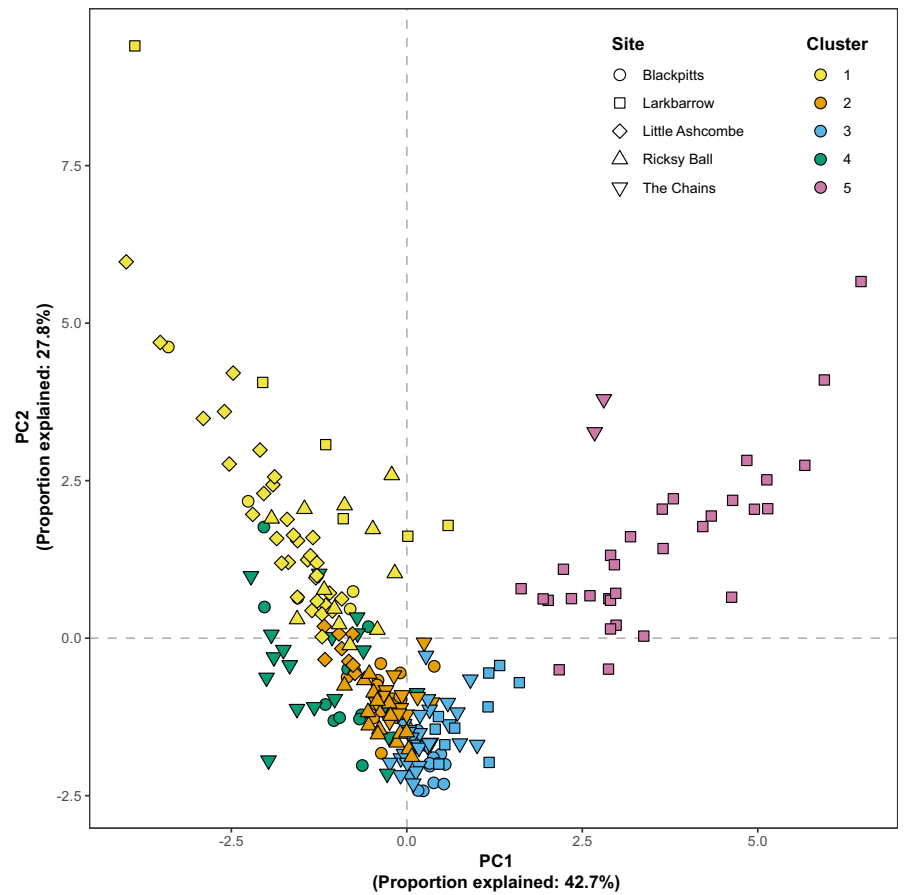
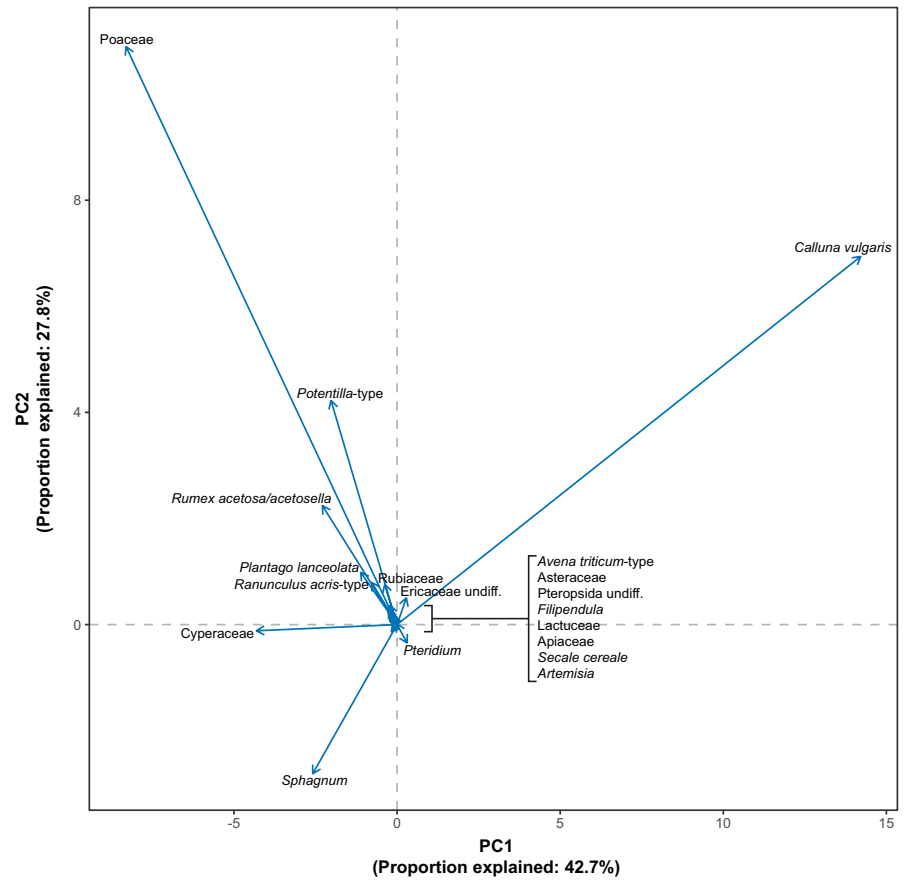
4.1 | Was the 19th century a notable period of ecological change?

We integrate paleoecological and historical data to demonstrate that drainage is associated with distinct ecological changes in the peatlands studied here. Specifically, regression analyses show that post-drainage landscapes are associated with lower *Sphagnum* abundances and pollen assemblages with fewer taxa (suggesting vegetation communities with fewer taxa) (Figures 7 and 9). *Sphagnum* is a non-vascular plant, and so reduced abundance as a direct result of drying (drainage) is logical, and this may be also exacerbated by a number of cascading effects. Drainage ditches have long-term effects on peatland hydrological processes, providing channels for water to flow more freely and making water tables less stable, as demonstrated by the effects of blocking them (Grand-Clement et al., 2013; Wilson et al., 2010). Lower water tables lead to reduced resilience of peat to decomposition and burning (Granath et al., 2016; Harris et al., 2020). This can result in peat losses which in turn may lead to reduced water retention capacity, further exacerbating *Sphagnum* declines and hampering re-growth. Lower water tables in upland peat systems are associated with greater abundances of

Molinia caerulea (Purple Moor-grass) (Gatis et al., 2016), which out-competes other heathland plants (Lunt et al., 2021). It is challenging to identify the precise mechanisms leading to reduced diversity in post-drainage settings, but enhanced *M. caerulea* abundance is likely to be a contributor, given the prevalence of Poaceae pollen in post-drainage samples (and present abundance of this species). Other factors (e.g., grazing pressure) are also likely to be important. The number of non-arboreal pollen taxa (taxon richness) is a reliable proxy of (relative) changes in vegetation diversity, though we acknowledge that there are limitations with this, particularly associated with taxonomic resolution (Odgaard, 1999). We did not find any association between *Sphagnum*, monocot graminoids, or diversity and a precipitation proxy, suggesting that anthropogenic disturbances may be more important in determining vegetation characteristics than precipitation in degraded peatlands. However, it should be noted that this is based on a regional proxy record (Loader et al., 2020), rather than a local precipitation reconstruction.

Regression analyses show that microcharcoal (>50 μ m) is positively associated with monocot (graminoids: Poaceae and Cyperaceae) abundances (Figure 8), indicating that burning is likely to be another important control on Exmoor peatland vegetation during the last ~600 years. However, shifts toward grass-dominated vegetation do not appear to be a 19th century phenomenon. Vegetation communities at most sites have developed consistently high grass abundances either before (Blackpitts, Little Ashcombe, Ricksy Ball) or after (Larkbarrow, The Chains) the 19th century, rather than during

FIGURE 5 Principal component analysis (PCA) of non-arboreal components of pollen assemblages (based on influx values).



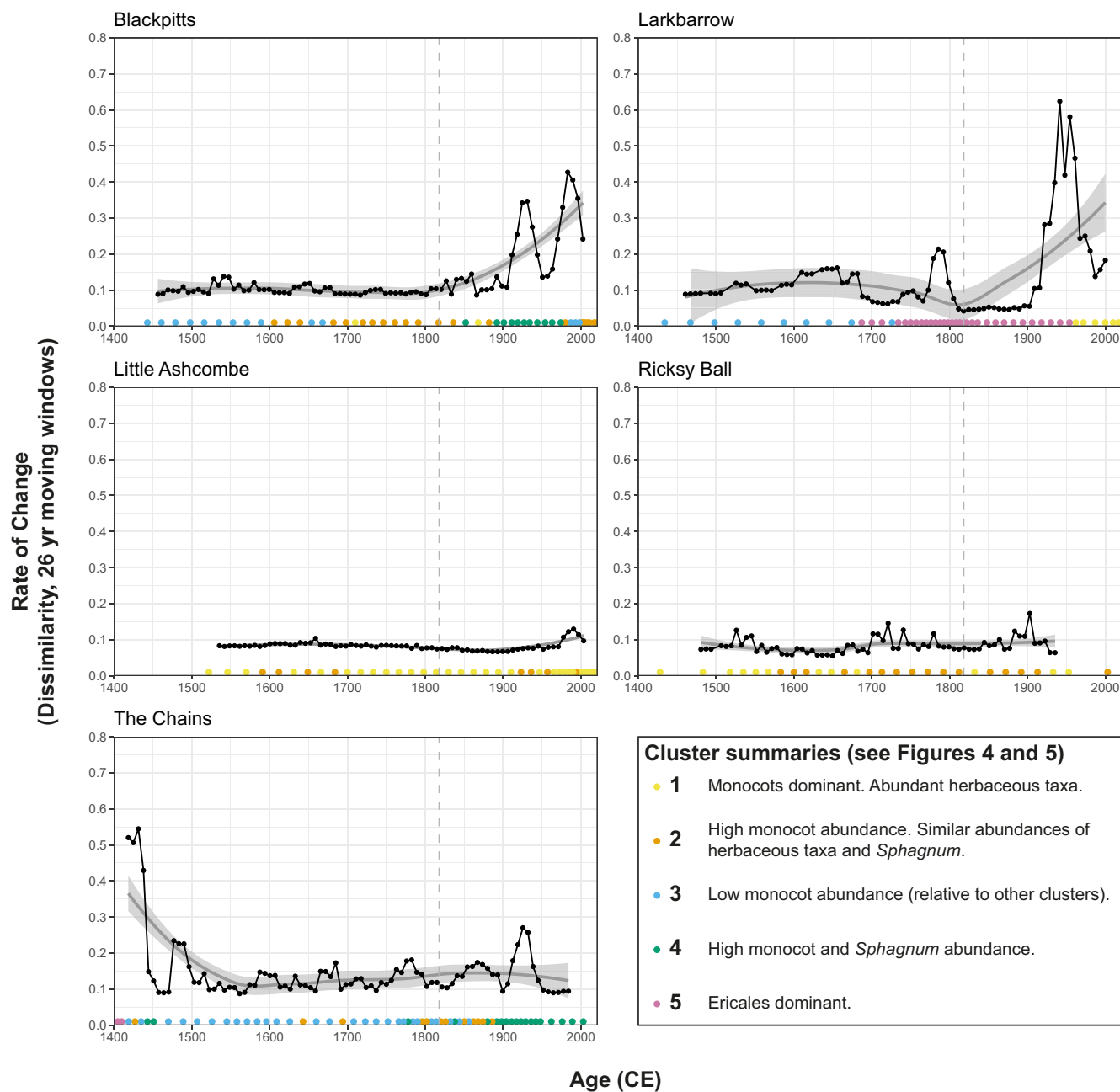


FIGURE 6 Rate-of-change plots for each pollen site, based on 26-year moving windows. Rug plots of colored points represent pollen samples and their respective clusters (see Figures 4, 5, and S11). (The maximum time represented by a single pollen sample (according to the age-depth models) is 25.6 years: moving windows (“bin_size”) of 26 years were used. “Number_of_shifts” was set to four, resulting in 6-year estimates of rate-of-change. Settings refer to “R-Ratepol” (Mottl et al., 2021)).

(Figures 3 and 6). Positive relationships between burning and grass abundances have previously been demonstrated in Exmoor paleoecological records, although burning can also be associated with heather (*Calluna vulgaris*), and both relationships are variable in time and space (Fyfe et al., 2018). *Molinia caerulea* (Purple Moor-grass) is of particular interest to land managers (Meade, 2016), and burning has been implicated in contributing to its present dominance in many moorland areas (Chambers et al., 1999), though this relationship is not straightforward (Glaves, 2016). *M. caerulea* was present

on Exmoor prior to the 19th century (Chambers et al., 1999), but its dominance likely developed during the twentieth century in response to changes in burning, grazing and/or atmospheric pollution (Chambers et al., 1999, 2007, 2013; Chambers & McCarroll, 2016). On this basis, pre-20th century monocot-dominated vegetation communities in this study were likely characterized by other grasses. However, wild grasses cannot be readily discriminated beyond family-level in pollen studies using standard microscopy (Mander et al., 2013), and this remains tentative.

Sphagnum ~ Microcharcoal + Precipitation + CoprophilousFungi + Drainage + SiteType

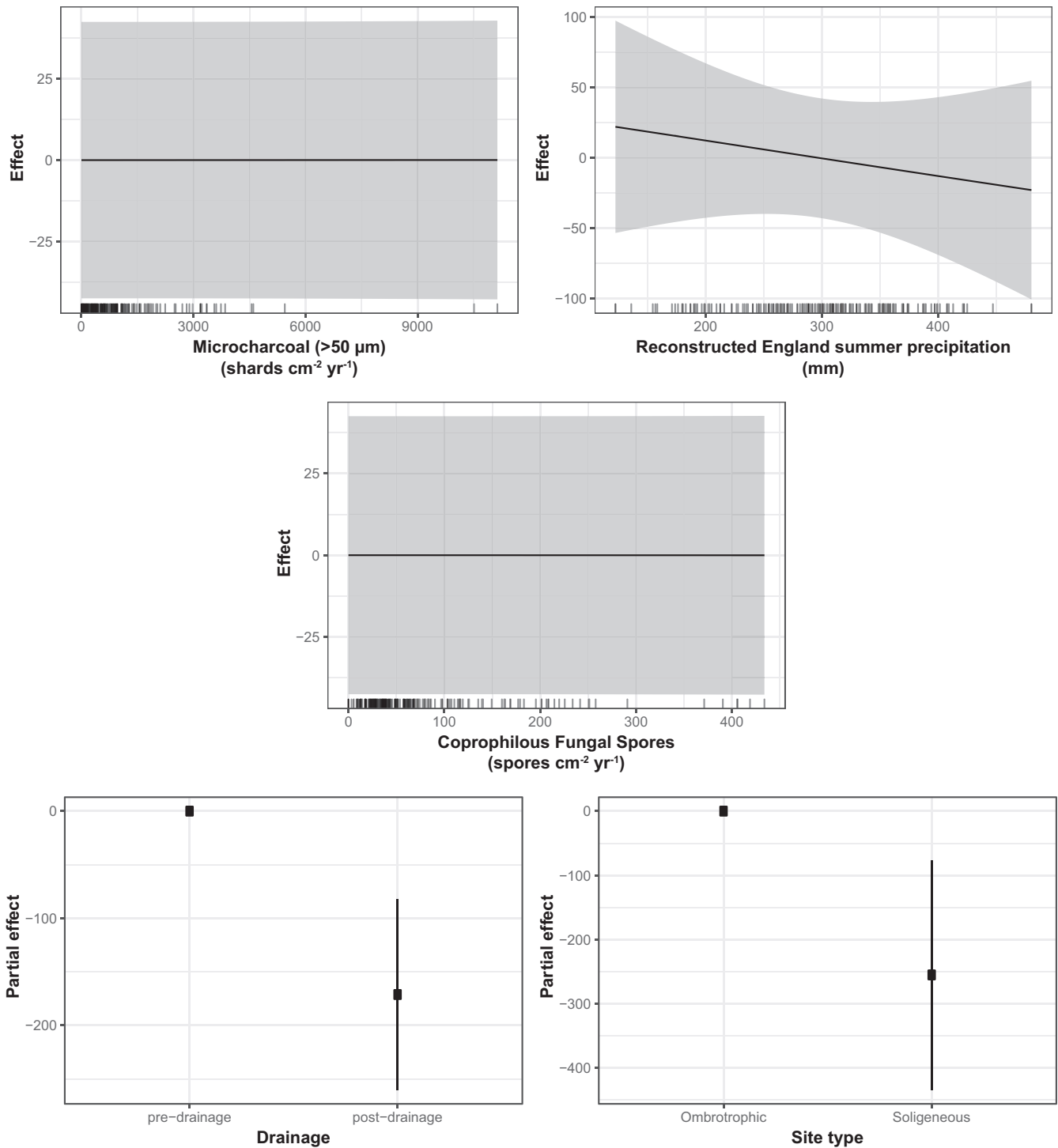


FIGURE 7 Graphical summary of a generalized additive model (GAM) (see Table S6) showing the estimated effects of microcharcoal (>50µm) influx, summer precipitation, coprophilous fungal spore influx, drainage, and site type on Sphagnum spore influx (spores cm⁻² yr⁻¹) (see also Table 1; Figure 3).

The 19th century is demonstrably associated with specific ecological changes on Exmoor (see above), but is not unique in this regard. Exmoor has a long history of human habitation, disturbance, and management (Fyfe, 2012; Fyfe et al., 2018; Fyfe, Brown, &

Coles, 2003; Fyfe, Brown, & Rippon, 2003; Merryfield, 1977; Merryfield & Moore, 1974). This potentially extends to Mesolithic burning and tree clearances (c. >6000 BCE) (Fyfe, Brown, & Coles, 2003; Merryfield, 1977; Merryfield & Moore, 1974), and

Graminoid monocots ~ Microcharcoal + Precipitation + Coprophilous Fungi + Drainage + SiteType

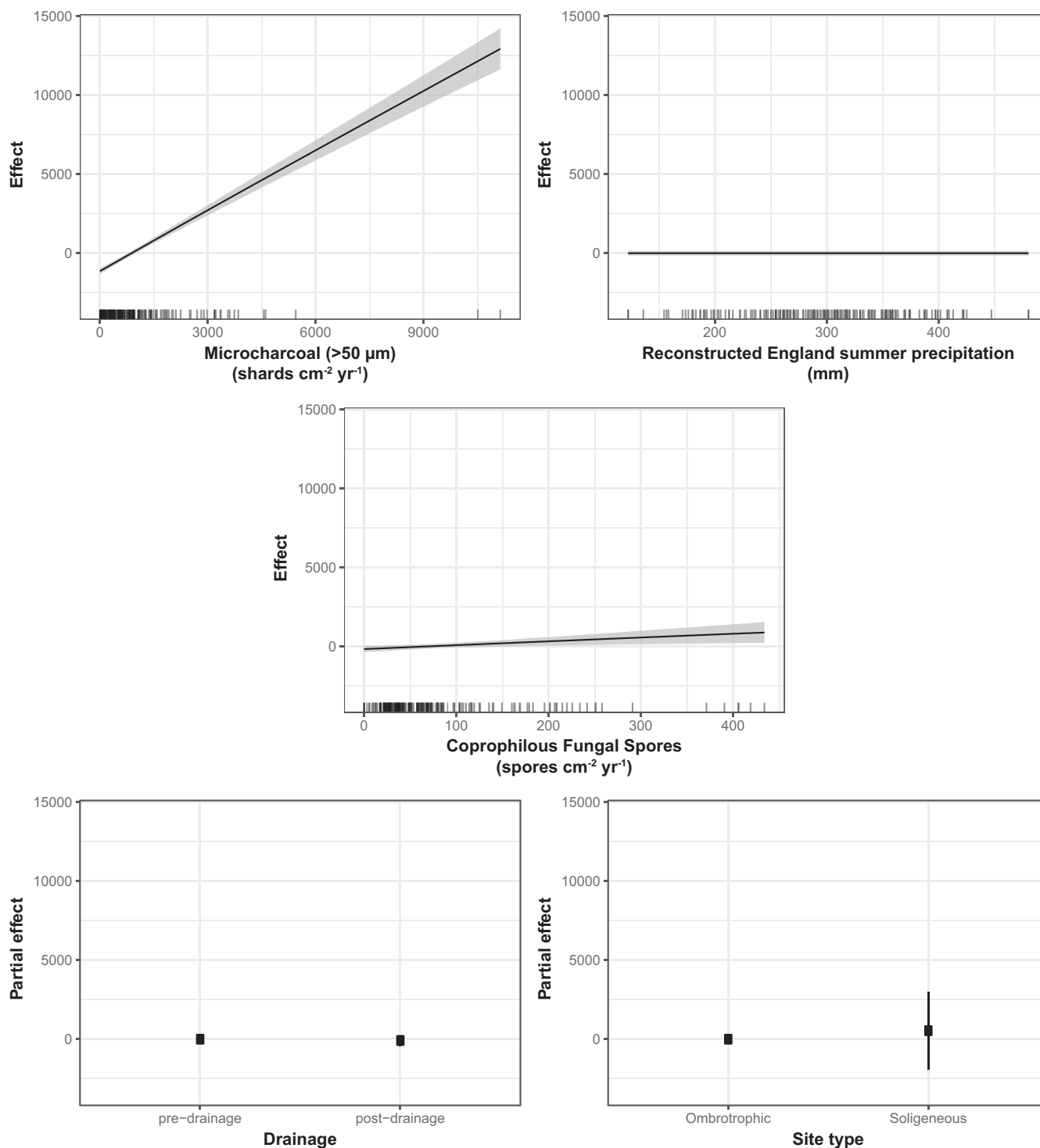


FIGURE 8 Graphical summary of a generalized additive model (GAM) (see Table S7) showing the estimated effects of microcharcoal (>50 μm) influx, summer precipitation, coprophilous fungal spore influx, drainage, and site type on graminoid monocot pollen influx (grains $\text{cm}^{-2} \text{yr}^{-1}$) (see also Table 1; Figure 3).

certainly includes disturbances from the Neolithic (~4000–500 BCE) and Bronze Age (~500 BCE–300 CE) onwards (Fyfe, 2012; Fyfe, Brown, & Coles, 2003). Few pollen studies have examined ecological change since the late Medieval (~1400 CE) on Exmoor in such detail,

and Figure 6 illustrates that change has been a constant, rather than an exception. While all sites have demonstrably been open moorland for the last 600 years (and probably for at least 2000–4000 years, since the late Neolithic/early Bronze age (Fyfe et al., 2018)), moorland

Taxon richness ~ Microcharcoal + Precipitation + CoprophilousFungi + Drainage + SiteType

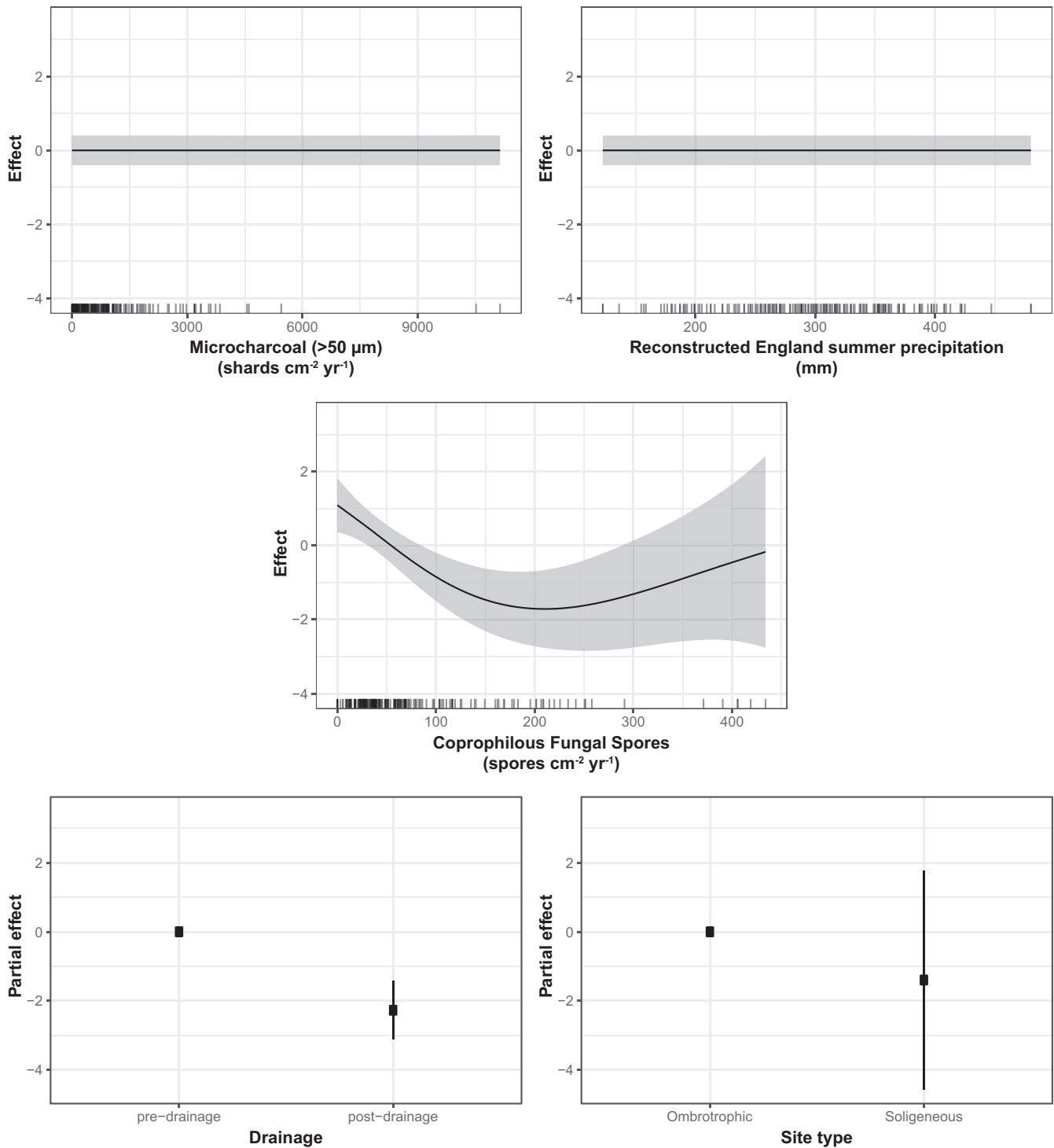


FIGURE 9 Graphical summary of a generalized additive model (GAM) (see Table S8) showing the estimated effects of microcharcoal (>50 μm) influx, summer precipitation, coprophilous fungal spore influx, drainage, and site type on non-arboreal taxon richness (see also Table 1; Figure 3).

characteristics have not remained unchanged. This is most obvious at Larkbarrow, which has alternated between grass and heather moorland (Callunetum) (see also Chambers et al. (1999)), and at other sites floristic diversity, the relative importance of grasses and *Sphagnum*

abundance have also fluctuated through time (Figures 3 and 6). This reflects long-term moorland responses to burning and grazing practices observed in Scotland, Wales, and Northern England, including reductions in floristic diversity with enhanced grazing pressure

(Hanley et al., 2008), and *Sphagnum* declines and graminoid expansion coincident with burning intensification (Chambers et al., 2013; McCarroll et al., 2016). At a community level, rates of change in the last ~600 years were generally greatest during the 19th century, and 19th century rates of change are not distinct from preceding centuries. This suggests that despite landscape-scale engineering (e.g., drainage) and reorganization (e.g., enclosure) being a feature of 19th century Exmoor (Hegarty & Wilson-North, 2014; Orwin & Sellick, 1970), with associated changes in vegetation (see above), the pace of vegetation change was not unusual in a post-medieval context. However, the rates and magnitudes of change among other organismal groups may be different. For example, following drainage at Ricksy Ball substantial turnover in microbial communities (testate amoebae) occurred rapidly, with implications for broader ecosystem productivity (Rowney et al., 2022).

4.2 | Modern land management and conservation

Paleoecology can be used to provide specific targets for conservation and restoration based on fixed points in the past (i.e., “baselines”) but, in most cases, this is ill-advised (A. L. Davies & Bunting, 2010). A more pragmatic approach is to use knowledge of the past as “a guide rather than a template” and identify processes that result in particular conditions (Higgs et al., 2014). This develops our understanding of ecosystems and how they may respond to future perturbations and interventions, thereby informing management decisions. Here, we present a range of reference conditions and evidence for the general impacts of various human interventions (processes) on moorland vegetation during the last ~600 years. Even within a relatively small area (~60 km²), there is no individual “smoking gun” or root cause for the present state of moorland vegetation. Drainage (19th century), burning and grazing are all demonstrably associated with past vegetation changes, including reductions in *Sphagnum*, reductions in taxon richness, increased monocot (graminoid) abundances, and other variables for which sufficiently long-term data are unavailable (e.g., atmospheric nitrogen deposition) may also be important (Noble et al., 2018). The aims of management interventions intended to increase *Sphagnum* abundances, increase taxon richness and reduce graminoid (e.g., *Molinia caerulea*) dominance (i.e., “restoration” *sensu lato*) are consistent with the long-term dynamics of Exmoor peatland systems (though site-specific histories should be borne in mind). Such interventions may include raising water tables through “re-wetting” to enhance biodiversity and carbon sequestration efficiency (Gatis et al., 2016; Grand-Clement et al., 2013, 2015; Zak & McInnes, 2022), or alterations to grazing and/or burning regimes (Glaves, 2016). The precise methods used to achieve these aims should be carefully considered with regard to efficacy and societal values (Zak & McInnes, 2022). Furthermore, “restoration” efforts may be considered as a continuation of thousands of years of humans managing moorlands to promote favored ecological outcomes, states, and processes.

5 | CONCLUSIONS

We demonstrate long-term associations between multiple anthropogenic disturbances and moorland vegetation. Nineteenth century drainage appears to have led to reductions in *Sphagnum* abundance and vegetation diversity. Over longer timescales, burning is associated with enhanced graminoid monocot abundance and grazing with lower vegetation diversity. Rate-of-change in moorland vegetation communities during the 19th century is not distinctive in a long-term context, and the 20th century is more distinctive in this regard. The aims of “restoration” interventions intended to increase *Sphagnum* abundances, increase taxon richness and reduce graminoid dominance are consistent with the long-term dynamics of the peatland systems examined here. “Restoration” deemed successful in these terms may or may not resemble pre-drainage conditions, which were themselves a function of millennia of successive moorland management regimes.

5.1 | Statement on inclusion

Our research was discussed with local stakeholders during development and disseminated in local outreach activities following completion. The lead institution is approximately 100 km from the study area.

AUTHOR CONTRIBUTIONS

Francis Michael Rowney: Conceptualization (equal); data curation (lead); formal analysis (lead); methodology (equal); writing – original draft (lead); writing – review and editing (lead). **Ralph Fyfe:** Conceptualization (equal); formal analysis (supporting); funding acquisition (equal); methodology (equal); project administration (equal); visualization (supporting); writing – original draft (supporting); writing – review and editing (supporting). **Leonard Baker:** Conceptualization (supporting); data curation (supporting); methodology (supporting); writing – review and editing (supporting). **Henry French:** Conceptualization (supporting); funding acquisition (equal); project administration (equal); writing – review and editing (supporting). **Martha B Koot:** Data curation (supporting); formal analysis (supporting); methodology (supporting); resources (supporting); writing – review and editing (supporting). **Havananda Ombashi:** Data curation (supporting); writing – review and editing (supporting). **Rhys G.O. Timms:** Data curation (supporting); formal analysis (supporting); methodology (supporting); resources (supporting); visualization (supporting); writing – review and editing (supporting).

ACKNOWLEDGMENTS

This work was supported by a Leverhulme Trust grant (RPG-2020-045). Professor Geoffrey Millward is thanked for his assistance in CORiF (University of Plymouth). Emily Browne is thanked for assistance in the field. Radiocarbon analyses were undertaken at ¹⁴Chrono Centre, Queen's University Belfast. Chris Hayward at the Tephra Analysis Unit (TAU), University of Edinburgh is thanked

for assistance with tephra chemical analyses. We are grateful to the anonymous reviewers for their contributions to improving the paper.

CONFLICT OF INTEREST STATEMENT

The authors have no conflicts of interest.

DATA AVAILABILITY STATEMENT

Data are available via the University of Plymouth PEARL repository (<https://doi.org/10.24382/Ops2-6t74>) and will also be made available via the European Pollen Database (EPD). <https://pearl.plymouth.ac.uk/>.

ORCID

Francis M. Rowney  <https://orcid.org/0000-0002-7986-5351>

REFERENCES

- Alday, J. G., O'Reilly, J., Rose, R. J., & Marrs, R. H. (2022). Long-term effects of sheep-grazing and its removal on vegetation dynamics of British upland grasslands and moorlands; local management cannot overcome large-scale trends. *Ecological Indicators*, 139(April), 108878. <https://doi.org/10.1016/j.ecolind.2022.108878>
- Bacon, K. L., Baird, A. J., Blundell, A., Bourgault, M. A., Chapman, P. J., Dargie, G., Dooling, G. P., Gee, C., Holden, J., Kelly, T. J., & Young, D. M. (2017). Questioning ten common assumptions about peatlands. *Mires and Peat*, 19, 1–23. <https://doi.org/10.19189/MaP.2016.OMB.253>
- Baker, A. G., Bhagwat, S. A., & Willis, K. J. (2013). Do dung fungal spores make a good proxy for past distribution of large herbivores? *Quaternary Science Reviews*, 62, 21–31. <https://doi.org/10.1016/j.quascirev.2012.11.018>
- Birks, H. J. B. (2012). Overview of numerical methods in Palaeolimnology. In H. J. B. Birks, A. F. Lotter, S. Juggins, & J. P. Smol (Eds.), *Tracking environmental change using Lake sediments: Data handling and numerical techniques* (pp. 19–92). Springer.
- Blaauw, M., Christen, J. A., & Aquino-López, M. A. (2021). Rplum: Bayesian age-depth modelling of cores dated by Pb-210. <https://cran.r-project.org/package=rplum>
- Blaauw, M., Christen, J. A., & Aquino-López, M. A. (2022). Rbacon: Age-depth modelling using Bayesian statistics. <https://cran.r-project.org/package=rbacon>
- Britton, A. J., Hester, A. J., Hewison, R. L., Potts, J. M., & Ross, L. C. (2017). Climate, pollution and grazing drive long-term change in moorland habitats. *Applied Vegetation Science*, 20(2), 194–203. <https://doi.org/10.1111/avsc.12260>
- Britton, A. J., Hewison, R. L., Mitchell, R. J., & Riach, D. (2017). Pollution and climate change drive long-term change in Scottish wetland vegetation composition. *Biological Conservation*, 210(April), 72–79. <https://doi.org/10.1016/j.biocon.2017.04.005>
- Chambers, F. M., Cloutman, E. W., Daniell, J. R. G., Mauquoy, D., & Jones, P. S. (2013). Long-term ecological study (palaeoecology) to chronicle habitat degradation and inform conservation ecology: An exemplar from the Brecon Beacons, South Wales. *Biodiversity and Conservation*, 22(3), 719–736. <https://doi.org/10.1007/s10531-013-0441-4>
- Chambers, F. M., Mauquoy, D., Gent, A., Pearson, F., Daniell, J. R. G., & Jones, P. S. (2007). Palaeoecology of degraded blanket mire in South Wales: Data to inform conservation management. *Biological Conservation*, 137(2), 197–209. <https://doi.org/10.1016/j.biocon.2007.02.002>
- Chambers, F. M., Mauquoy, D., & Todd, P. A. (1999). Recent rise to dominance of *Molinia caerulea* in environmentally sensitive areas: New perspectives from palaeoecological data. *Journal of Applied Ecology*, 36(5), 719–733. <https://doi.org/10.1046/j.1365-2664.1999.00435.x>
- Chambers, F. M., & McCarroll, J. (2016). Palaeoenvironmental evidence for the recent rise of *Molinia caerulea*: Vital information for conservation managers. In R. Meade (Ed.), *Managing Molinia? Proceedings of a 3 day conference September 2015* (pp. 22–27). National Trust <http://publications.naturalengland.org.uk/publication/4557996659572736>
- Davies, A. L., & Bunting, M. J. (2010). Applications of Palaeoecology in conservation. *The Open Ecology Journal*, 3, 54–67.
- Davies, A. L., Harrault, L., Milek, K., McClymont, E. L., Dallimer, M., Hamilton, A., & Warburton, J. (2022). A multiproxy approach to long-term herbivore grazing dynamics in peatlands based on pollen, coprophilous fungi and faecal biomarkers. *Palaeogeography, Palaeoclimatology, Palaeoecology*, 598(August 2021), 111032. <https://doi.org/10.1016/j.palaeo.2022.111032>
- Davies, G. M., Kettridge, N., Stoeff, C. R., Gray, A., Ascoli, D., Fernandes, P. M., Marrs, R., Allen, K. A., Doerr, S. H., Clay, G. D., McMorro, J., & Vandvik, V. (2016). The role of fire in UK peatland and moorland management: The need for informed, unbiased debate. *Philosophical Transactions of the Royal Society B: Biological Sciences*, 371(1696), 20150342. <https://doi.org/10.1098/rstb.2015.0342>
- Djamali, M., & Cilleros, K. (2020). Statistically significant minimum pollen count in quaternary pollen analysis; the case of pollen-rich lake sediments. *Review of Palaeobotany and Palynology*, 275, 104156. <https://doi.org/10.1016/j.revpalbo.2019.104156>
- Francis, P. D., & Slater, D. S. (1990). *A record of vegetational and land use change from upland peat deposits on Exmoor part 2: Hoar moor*. Somerset Archaeology and Natural History.
- Fyfe, R. M. (2012). Bronze age landscape dynamics: Spatially detailed pollen analysis from a ceremonial complex. *Journal of Archaeological Science*, 39(8), 2764–2773. <https://doi.org/10.1016/j.jas.2012.04.015>
- Fyfe, R. M., Brown, A. G., & Coles, B. (2003). Mesolithic to bronze age vegetation change and human activity in the Exe valley, Devon, UK. *Proceedings of the Prehistoric Society*, 69, 161–181. <https://doi.org/10.1017/s0079497x00001298>
- Fyfe, R. M., Brown, A. G., & Rippon, S. J. (2003). Mid- to late-Holocene vegetation history of greater Exmoor, UK: Estimating the spatial extent of human-induced vegetation change. *Vegetation History and Archaeobotany*, 12(4), 215–232. <https://doi.org/10.1007/s00334-003-0018-3>
- Fyfe, R. M., Ombashi, H., Davies, H. J., & Head, K. (2018). Quantified moorland vegetation and assessment of the role of burning over the past five millennia. *Journal of Vegetation Science*, 29(3), 393–403. <https://doi.org/10.1111/jvs.12594>
- Gatis, N., Luscombe, D. J., Grand-Clement, E., Hartley, I. P., Anderson, K., Smith, D., & Brazier, R. E. (2016). The effect of drainage ditches on vegetation diversity and CO₂ fluxes in a *Molinia caerulea*-dominated peatland. *Ecohydrology*, 9(3), 407–420. <https://doi.org/10.1002/eco.1643>
- Glaves, D. J. (2016). *Molinia caerulea* in upland habitats: a Natural England perspective on the perceived issue of 'over-dominance'. In R. Meade (Ed.), *Managing Molinia? Proceedings of a 3 day conference September 2015* (pp. 14–16). National Trust. <http://publications.naturalengland.org.uk/publication/4557996659572736>
- Granath, G., Moore, P. A., Lukenbach, M. C., & Waddington, J. M. (2016). Mitigating wildfire carbon loss in managed northern peatlands through restoration. *Scientific Reports*, 6(March), 1–9. <https://doi.org/10.1038/srep28498>
- Grand-Clement, E., Anderson, K., Smith, D., Angus, M., Luscombe, D. J., Gatis, N., Bray, L. S., & Brazier, R. E. (2015). New approaches to the restoration of shallow marginal peatlands. *Journal of Environmental Management*, 161, 417–430. <https://doi.org/10.1016/j.jenvm.2015.06.023>

- Grand-Clement, E., Anderson, K., Smith, D., Luscombe, D., Gatis, N., Ross, M., & Brazier, R. E. (2013). Evaluating ecosystem goods and services after restoration of marginal upland peatlands in south-west England. *Journal of Applied Ecology*, 50(2), 324–334. <https://doi.org/10.1111/1365-2664.12039>
- Hanley, N., Davies, A. L., Angelopoulos, K., Hamilton, A., Ross, A., Tinch, D., & Watson, F. (2008). Economic determinants of biodiversity change over a 400-year period in the Scottish uplands. *Journal of Applied Ecology*, 45, 1557–1565. <https://doi.org/10.1111/j.1365-2664.2008.01570.x>
- Harris, L. I., Roulet, N. T., & Moore, T. R. (2020). Drainage reduces the resilience of a boreal peatland. *Environmental Research Communications*, 2(6). <https://doi.org/10.1088/2515-7620/ab9895>
- Hegarty, C., & Wilson-North, R. (2014). *The archaeology of hill farming on Exmoor*. English Heritage.
- Higgs, E., Falk, D. A., Guerrini, A., Hall, M., Harris, J., Hobbs, R. J., Jackson, S. T., Rhemtulla, J. M., & Throop, W. (2014). The changing role of history in restoration ecology. *Frontiers in Ecology and the Environment*, 12(9), 499–506. <https://doi.org/10.1890/110267>
- Legendre, P., & Birks, H. J. B. (2012). From classical to canonical ordination. In H. J. B. Birks, A. F. Lotter, S. Juggins, & J. P. Smol (Eds.), *Tracking environmental change using Lake sediments: Data handling and numerical techniques* (pp. 201–248). Springer.
- Leifeld, J., & Menichetti, L. (2018). The underappreciated potential of peatlands in global climate change mitigation strategies. *Nature Communications*, 9(1), 1071. <https://doi.org/10.1038/s41467-018-03406-6>
- Littlewood, N., Anderson, P., Artz, R., Bragg, O., Lunt, P. H., & Land, M. (2010). *Peatland biodiversity*. https://www.iucn-uk-peatlandprogramme.org/sites/www.iucn-UK-peatlandprogramme.org/files/Review%20peatland%20biodiversity,%20June%202011%20Final_0.Pdf
- Loader, N. J., Young, G. H. F., McCarroll, D., Davies, D., Miles, D., & Bronk Ramsey, C. (2020). Summer precipitation for the England and Wales region, 1201–2000 ce, from stable oxygen isotopes in oak tree rings. *Journal of Quaternary Science*, 35(6), 731–736. <https://doi.org/10.1002/jqs.3226>
- Lunt, P. H., Leigh, J. L., McNeil, S. A., & Gibb, M. J. (2021). Using Dartmoor ponies in conservation grazing to reduce *Molinia caerulea* dominance and encourage germination of *Calluna vulgaris* in heathland vegetation on Dartmoor, UK. *Conservation Evidence*, 18, 25–30. <https://doi.org/10.52201/CEJ18SVSR7750>
- MacDermot, E. T. (1973). *A history of the Forest of Exmoor*. David & Charles.
- Mander, L., Li, M., Mio, W., Fowlkes, C. C., & Punyasena, S. W. (2013). Classification of grass pollen through the quantitative analysis of surface ornamentation and texture. *Proceedings. Biological Sciences / the Royal Society*, 280(1770), 20131905. <https://doi.org/10.1098/rspb.2013.1905>
- Marrs, R. H., Phillips, J. D. P., Todd, P. A., Ghorbani, J., & Le Duc, M. G. (2004). Control of *Molinia caerulea* on upland moors. *Journal of Applied Ecology*, 41(2), 398–411. <https://doi.org/10.1111/j.0021-8901.2004.00901.x>
- McCarroll, J., Chambers, F. M., Webb, J. C., & Thom, T. (2016). Using palaeoecology to advise peatland conservation: An example from west Arkengarthdale, Yorkshire, UK. *Journal for Nature Conservation*, 30, 90–102. <https://doi.org/10.1016/j.jnc.2016.02.002>
- Meade, R. (2016). 'Managing *Molinia*' conference, 14–16 September 2015. In R. Meade (Ed.), *Managing *Molinia*? Proceedings of a 3 day conference September 2015*. Huddersfield <http://publications.naturallengland.org.uk/publication/4557996659572736>
- Merryfield, D. L. (1977). *Palynological and Stratigraphical studies on Exmoor*. University of London.
- Merryfield, D. L., & Moore, P. D. (1974). Prehistoric human activity and blanket peat initiation on Exmoor. *Nature*, 250(5465), 439–441. <https://doi.org/10.1038/250439a0>
- Minayeva, T. Y., Bragg, O. M., & Sirin, A. A. (2017). Towards ecosystem-based restoration of peatland biodiversity. *Mires and Peat*, 19, 1–36. <https://doi.org/10.19189/MaP.2013.OMB.150>
- Moore, P. D., Webb, J., & Collinson, M. E. (1991). *Pollen Analysis*. Blackwell.
- Mottl, O., Grytnes, J. A., Seddon, A. W. R., Steinbauer, M. J., Bhatta, K. P., Felde, V. A., Flantua, S. G., & Birks, H. J. B. (2021). Rate-of-change analysis in paleoecology revisited: A new approach. *Review of Palaeobotany and Palynology*, 293, 104483. <https://doi.org/10.1016/j.revpalbo.2021.104483>
- Noble, A., Palmer, S. M., Glaves, D. J., Crowle, A., Brown, L. E., & Holden, J. (2018). Prescribed burning, atmospheric pollution and grazing effects on peatland vegetation composition. *Journal of Applied Ecology*, 55(2), 559–569. <https://doi.org/10.1111/1365-2664.12994>
- Odgaard, B. V. (1999). Fossil pollen as a record of past biodiversity. *Journal of Biogeography*, 26(1), 7–17. <https://doi.org/10.1046/j.1365-2699.1999.00280.x>
- Oksanen, J., Simpson, G. L., Blanchet, F., Kindt, R., Legendre, P., Minchin, P., O'Hara, R. B., Solymos, P., Stevens, M. H. H., Szöcs, E., Wagner, H., Barbour, M., Bedward, M., Bolker, B., Borcard, D., Carvalho, G., Chirico, M., De Caceres, M., Durand, S., ... Weedon, J. (2022). *Vegan: Community ecology package*. R Package Version 2.6–2. <https://cran.r-project.org/package=vegan>
- Orwin, C. S., & Sellick, R. J. (1970). *The reclamation of Exmoor Forest (second Ed)*. David and Charles.
- Perrotti, A. G., & van Asperen, E. N. (2018). Dung fungi as a proxy for megaherbivores: Opportunities and limitations for archaeological applications. *Vegetation History and Archaeobotany*, 28, 93–104. <https://doi.org/10.1007/s00334-018-0686-7>
- R Core Team. (2022). *R: A language and environment for statistical computing*. R Foundation for Statistical Computing. <https://www.r-project.org/>
- Reimer, P. J., Austin, W. E. N., Bard, E., Bayliss, A., Blackwell, P. G., Bronk Ramsey, C., Butzin, M., Cheng, H., Edwards, R. L., Friedrich, M., & Talamo, S. (2020). The IntCal20 northern hemisphere radiocarbon age calibration curve (0–55 cal kBP). *Radiocarbon*, 62(4), 725–757. <https://doi.org/10.1017/RDC.2020.41>
- Riley, H. (2019). The landscape of the knights on Exmoor: A case study for the Exmoor mires partnership.
- Riley, H., & Wilson-North, R. (2001). *The field archaeology of Exmoor*. English Heritage. <http://www.openbibart.fr/item/display/10068/785444>
- Ritson, J. P., Bell, M., Brazier, R. E., Grand-Clement, E., Graham, N. J. D., Freeman, C., Smith, D., Templeton, M. R., & Clark, J. M. (2016). Managing peatland vegetation for drinking water treatment. *Scientific Reports*, 6(1), 1–9. <https://doi.org/10.1038/srep36751>
- Rotherham, I. D. (2015). Bio-cultural heritage and biodiversity: Emerging paradigms in conservation and planning. *Biodiversity and Conservation*, 24(13), 3405–3429. <https://doi.org/10.1007/s10531-015-1006-5>
- Rowney, F. M., Fyfe, R. M., Anderson, P., Barnett, R., Blake, W., Daley, T., Head, K., MacLeod, A., Matthews, I., & Smith, D. N. (2022). Ecological consequences of historic moorland 'improvement'. *Biodiversity and Conservation*, 31, 3137–3161. <https://doi.org/10.1007/s10531-022-02479-6>
- Seddon, A. W. R., Mackay, A. W., Baker, A. G., Birks, H. J. B., Breman, E., Buck, C. E., Ellis, E. C., Froyd, C. A., Gill, J. L., Gillson, L., Johnson, E. A., & Witkowski, A. (2014). Looking forward through the past: Identification of 50 priority research questions in palaeoecology. *Journal of Ecology*, 102(1), 256–267. <https://doi.org/10.1111/1365-2745.12195>
- Stockmarr, J. (1971). Tablets with spores used in absolute pollen analysis. *Pollen et spores*, XIII(January 1971), 615–621.
- Tanneberger, F., Appulo, L., Ewert, S., Lakner, S., Ó Brolcháin, N., Peters, J., & Wichtmann, W. (2021). The power of nature-based solutions: How peatlands can help us to achieve key EU sustainability

- objectives. *Advanced Sustainable Systems*, 5(1), 1–10. <https://doi.org/10.1002/adsu.202000146>
- Wilson-North, R. (2017). The rediscovery of the knight family archive and its importance to Exmoor. *Somerset Archaeology and Natural History*, 161, 189–194.
- Wilson, L., Wilson, J., Holden, J., Johnstone, I., Armstrong, A., & Morris, M. (2010). Recovery of water tables in Welsh blanket bog after drain blocking: Discharge rates, time scales and the influence of local conditions. *Journal of Hydrology*, 391(3–4), 377–386. <https://doi.org/10.1016/j.jhydrol.2010.07.042>
- Wood, S. N. (2017). *Generalized additive models: An introduction with R* (2nd ed.). CRC Press/Taylor & Francis Group. <https://doi.org/10.1201/9781315370279>
- Wood, S. N. (2022). mgcv. <https://cran.r-project.org/web/packages/mgcv/index.html>
- Yeo, M. J. M., & Blackstock, T. H. (2002). A vegetation analysis of the pastoral landscapes of upland Wales, UK. *Journal of Vegetation Science*, 13(6), 803–816. <https://doi.org/10.1111/j.1654-1103.2002.tb02110.x>

- Zak, D., & McInnes, R. J. (2022). A call for refining the peatland restoration strategy in Europe. *Journal of Applied Ecology*, 59(11), 2698–2704. <https://doi.org/10.1111/1365-2664.14261>

SUPPORTING INFORMATION

Additional supporting information can be found online in the Supporting Information section at the end of this article.

How to cite this article: Rowney, F. M., Fyfe, R. M., Baker, L., French, H., Koot, M. B., Ombashi, H., & Timms, R. G. O (2023). Historical anthropogenic disturbances explain long-term moorland vegetation dynamics. *Ecology and Evolution*, 13, e9876. <https://doi.org/10.1002/ece3.9876>