

2023

# An investigation into how tree characteristics and species composition associated with veteran and ancient trees influences invertebrate species

Clapp, B.

Clapp, B. (2023) 'An investigation into how tree characteristics and species composition associated with veteran and ancient trees influences invertebrate species', *The Plymouth Student Scientist*, 16(2), pp. 224-252.

<https://pearl.plymouth.ac.uk/handle/10026.1/21838>

---

The Plymouth Student Scientist  
University of Plymouth

---

*All content in PEARL is protected by copyright law. Author manuscripts are made available in accordance with publisher policies. Please cite only the published version using the details provided on the item record or document. In the absence of an open licence (e.g. Creative Commons), permissions for further reuse of content should be sought from the publisher or author.*

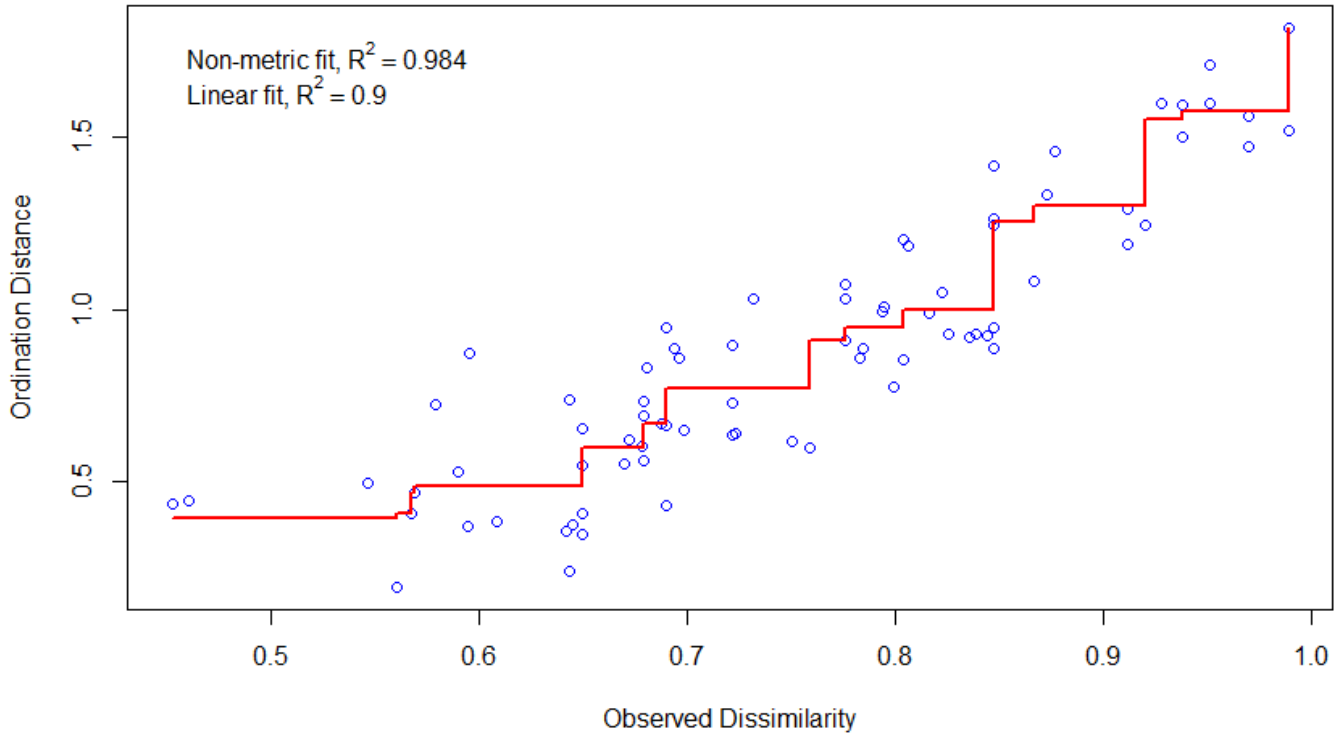
## Appendices

**Appendix A.** The recorded parameters and how they were inputted into the GPS-7X. Further information of data collection and the information type listed throughout the methodology. Radio Buttons is a menu with multiple fixed values or expressions

<b>Features</b>	<b>Parameters</b>	<b>Information Type</b>
<b>Tree</b>	Location	Radio Buttons
	Tree Species	Picklist
	Tree Type	Picklist
	Diameter (DBH)	Numerical (Decimal)
	Tree Form	Radio Buttons
	Microhabitats	Numerical
	Fungal Species	Text
	Fungi Score	Radio Buttons
	Epiphyte Species	Text
	Epiphyte Score	Radio Buttons
	Invertebrates (Hand Search)	Text
	Invertebrate Score	Radio Buttons
	Tree Distance	Numerical
	<b>Environment</b>	Weather
Light Intensity (LUX)		Numerical
Temperature		Numerical

where one value can be selected like the location Beaumont Park.

**Appendix B.** Stress plot and values used for the Nonmetric Multidimensional Scaling ordination plot (Figure 2). Stress value= 0.1247354 indicates a good representation of reduced dimensions. There is a good non-metric fit between observed dissimilarities.



**Appendix C.** Summarised raw data table including the variables used for data analysis.

<b>Tree Species</b>	<b>Tree Type</b>	<b>DBH</b>	<b>Number of tree cavities</b>	<b>Invertebrate species richness</b>	<b>Fungi species richness</b>	<b>Epiphyte species richness</b>
Turkey Oak	Mature	1.0	0	4	0	4
Turkey Oak	Veteran	1.0	1	2	0	3
Turkey Oak	Mature	0.9	0	0	0	3
Common Beech	Veteran	1.0	1	1	1	3
Turkey Oak	Mature	0.9	0	1	0	2
Turkey Oak	Veteran	1.2	1	4	1	3
Common Beech	Veteran	1.3	2	2	0	5
Common Beech	Mature	0.9	0	5	1	3
Pedunculate Oak	Ancient	1.9	5	5	2	7
Pedunculate Oak	Mature	0.4	0	0	1	3
Common Beech	Mature	1.2	0	3	1	3
Pedunculate Oak	Veteran	1.5	4	3	2	3
Pedunculate Oak	Veteran	1.4	1	1	2	2